

February 2026

HEDS

Issue No. 449

I



ADRIAN MCGUIGAN

EVERTON



Lost Garden

Some of our lovely volunteers held a site meeting and considered what needs doing to develop the garden further in 2026

Our hedgehogs have hibernated and much of the vegetation has died down . Green alkanet is bursting into life all over the site and some of the snowdrops and aconites that we planted last year are already flowering and the sweet violets are just beginning to flower. Birdsong is increasing daily and it won't be long before they start to nest so we need to clear some of the most invasive ivy before this happens, leaving some for habitats.

When the evenings are lighter we plan to continue to meet and work on Wednesday evenings from 4-6; always with a hot drink and cake!

You are welcome to join us. If anyone could repair our bench we would be most grateful.

SUE HUGHES

Church Tower

The Churchwarden and PCC members thought it helpful if we informed the village of our progress in securing funding to undertake the urgent recovery of our tower roof on Holy Trinity Church, Everton.

By generous donations, fundraising events, grants from charitable foundations, promises and claw-back over the past twelve months, we have been able to achieve a magnificent total, so far of approximately £50,000. Of our estimated repair costs of around £90,000.

We are in great need of further support to enable us to reach our target, ever mindful of the effects of inflation acting on our funds, together with a time limit on some of the grants promised.

We are in great need of any support which would enable us to keep our Church open to fulfil its role in our village life. If you could help, please contact Mr John Dunn, our Churchwarden, or any PCC member.

Yours sincerely,

Holy Trinity Church, Everton.

Rural Watch Scheme

Kick-Off Meeting Success

On 20th January, the Parish Council hosted the Nottinghamshire Police Rural Watch Scheme (RWS) team for an informative presentation. The session highlighted how community involvement helps deter and detect crime and anti-social behaviour in our rural areas. The well-attended meeting saw seven committed residents sign up as new members of the Everton RWS. In the coming months, you can expect to see them walking public rights of way and keeping an eye on public spaces.

Please remember: all members of the public should continue to report suspicious activity or incidents directly to the police.

- In an emergency, always call 999.
- For non-urgent matters, use 101.

You can also report incidents online via the Nottinghamshire Police website at:

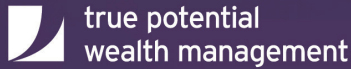
www.nottinghamshire.police.uk

Reporting incidents, no matter how small, helps Nottinghamshire Police build detailed intelligence maps of our area. This allows them to deploy their resources more effectively and keep our community safer.

Want to get involved or learn more?

If you missed the meeting or would like further information about the Rural Watch Scheme, you can:

- Visit www.nottsalerts.co.uk
- Or email the Parish Clerk at clerk@evertonparishcouncil.org.uk



Investment and Retirement advice to help reach your financial goals.

We all have unique financial goals in life that we would like to achieve. Whether it is growing your wealth, retiring early or leaving wealth to the next generation.

I can build a bespoke financial plan that aims to help you reach your long-term goals.

I can offer specialist advice in:

- Investment & Savings
- Retirement & Pensions
- Inheritance, Estates & Tax



Contact me to find out if financial advice is right for you.

Steven Bell

Wealth Management Partner
5 Sunderland Street, Tickhill, Doncaster, South Yorkshire, DN11 9PT
T 07429344428 E stevenbell@truepotential.co.uk
www.truepotential.co.uk/steven-bell

With investing, your capital is at risk. Investments can fluctuate in value and you may get back less than you invest. Tax is subject to an individual's personal circumstances, and tax rules can change at any time. The Financial Conduct Authority do not regulate, Will Writing, Tax Advice and Estate Planning. Pension eligibility and tax rules apply. We offer non-investment protection products (e.g. term assurance, income protection, critical illness, and buildings and contents) from a range of insurers.

True Potential Wealth Management LLP is authorised and regulated by the Financial Conduct Authority, FRN 529810, www.fca.org.uk. Registered in England and Wales as a Limited Liability Partnership No. OC356611.



as of December 2025





JOY BACON

Joy Eileen Parker was born on 5th October 1945 in Perry Barr, Birmingham, the daughter of Dora and James Parker and younger sister of Ken and Jimmy. She attended Kendrick Grammar School in Birmingham, showing determination as she travelled across the city each day until her family moved closer. After sixth form, Joy and two friends went inter-railing across Europe, visiting Italy and Spain to see her brother Ken's family.

Joy initially hoped to become a speech therapist, but her ambitions later shifted to teaching. She trained at Bretton Hall College near Leeds and specialised in English. Here she met Richard, who was studying music. After graduating, they married and spent three unforgettable years teaching in Nassau, Bahamas (sometimes in cockroach-filled classrooms), and from here they enjoyed adventures to Mexico, Peru, Bolivia and New York.

Back in England, Joy and Richard bought a flat in Crofton, Wakefield and welcomed their son James. In 1978, they moved to Everton, where their daughter Charis was born. Joy loved Everton, and over the years she actively supported various societies, including the

history and gardening societies, WI and visiting the primary school with the Bible group. She enjoyed walking the family dogs (Sheba, Blue 1 and more recently Blue 2) through the village and woods, always stopping to chat with friends and neighbours.

Joy returned to teaching when her children started school, working for over 20 years at North Border Junior School in Bircotes as a class teacher, English Lead and Assistant Head Teacher. She loved teaching here and treasured the friendships she made with members of staff, sharing theatre trips, garden centre visits and countryside hikes.

Joy's retirement coincided with the birth of her grandchildren, and she delighted in trips to Cheshire for babysitting, birthdays, Christmases and holidays. Her love of travel took her and Richard to many countries, including Egypt for her 60th, where she explored the Pyramids and Petra. After Richard passed, she continued to embrace adventures with friends and family.

Joy was an intelligent, warm and caring lady with a wonderful sense of humour, who brought light and happiness into our lives. She was adored by her family and will be dearly missed.

Charis Shoesmith

SCARECROWS, FLOWERS AND PLANT SALE

Early notice that over the weekend of 16/17 |May, the village will be full of some very interesting visitors. A Scarecrow Festival is planned with various categories - a chance for everyone to make a scarecrow and display it. If you do not live in the vilage we will display them in the Churchyard, the theme will be Rural Life. We hope organisations in the village will join in and we can fill the village with them.

In the Church, there will be a flower festival again on the theme of rural life.

We would love local businesses to sponsor the

flower arrangements or a scarecrow – the more the merrier.

On Sunday, the Garden Holders will hold their usual plant sale and craft stalls. And bacon butties, of course.

All the profits from the event will go to the Church Tower restoration fund - we are still working out the details of the event, but hope the village will support us as usual.

Further information from Sid (07745 533216) or Ann (818993 or 073777 94790). All offers of help and ideas are very welcome.

4 Contact us: e: hedstogether@gmail.com // t: 01777 472396





For over 100 years and 5 generations...

W.E. Pinder & Son have been providing bespoke funeral services for local families.

For further details, telephone: **01302 710285**
or visit our website: **www.wepinder.com**

W.E. PINDER & SON

FAMILY FUNERAL DIRECTORS
— 1914 —

Recommended by
the good funeral guide.
2014

Member Association
of Funeral Directors

GOLDEN CHARTER

FUNERAL PLANS

CHIMNEY TROUBLES CURED BY THOSE CHIMNEY CHAPS

- Chimney Lining Services
- Chimney rebuilds & restoration
- Multi fuel stoves supplied & fitted
- Inglenooks created

CHIMNEY LINING SYSTEMS
thermocrete[®]

HELPLINE: 01777872391

www.cliffordheating.co.uk

CLIFFORD Heating Limited

Your Home Heating Specialist

- AGA & RAYBURN Range Cooker Specialist.
- Oil, Gas and Solid Fuel heating engineers.
- Fully fitted central heating systems.
- Boiler breakdown experts.
- Reconditioned AGA's inc. 13 amp electric.
- Monthly service plans from as little as £12 per month

T. 01777 872391

Online at www.cliffordheating.co.uk





EVERTON Primary School

"Everton Primary is a supportive learning environment. The teachers really care about the children's well-being." Parent View. Ofsted 2023

"Pupils and staff get on well at this school. Relationships are consistently positive." Ofsted 2023

The start of the new calendar year at Everton Primary School began with a lot of excitement as snow lay on the ground. Days like those are wonderful in a primary school because we get to see the expressions on children's faces as they enjoy spending their time outdoors.

This term we have started our new after-school clubs: Games, Writing, Cooking, Choir, Multiplication and Year 6 Clubs, alongside our new topics embedded within our curriculum in school, such as 'Dinosaurs', Africa, Ancient Egypt and The Solar System.

During January, our Year 3 and 4 children started school swimming at Swim Stars in Bawtry, where they have shown many EverTen characteristics of learning, including confidence, enthusiasm and independence. Our Year 2 children visited our feeder secondary school – The Elizabethan Academy – where they took part in a Dance and Gymnastics workshop, showing EverTen characteristics such as confidence, ambition and enthusiasm.

We are continuing to celebrate our children's achievements both in and out of school, as well as previous members of our school and community, so that they know that we are always proud of them. Therefore, if you, or anyone that you know in our community, has achieved something that we can celebrate in school, then please let me know, and it will go on our Achievement Board and be discussed with our children to help inspire them and give them even greater aspirations for the future.

Everton Primary School is a wonderful, friendly and happy school which gives opportunities for children to be children and a wide range of activities and positive experiences. We currently have spaces in

Nursery, Reception and Year 1. If you are currently looking for child places in these year groups, then please apply to join the EverTeam! If you would like to arrange a school visit or ask any questions about school admission, then please feel free to call or email the school on 01777817350 or office@everton.notts.sch.uk

Andrew Green
Headteacher

NEEDHAM AND PIKE Your LOCAL decorators

Interior and Exterior
Over 25 years experience
Free estimates

Phone: **01302 714151**
or **01302 844813**



CHALLENGE

CARPET AND UPHOLSTERY CLEANERS

Lounge 12ft x 15ft - **£50**

3 piece suite - **£59**

Hall/Stairs/Landing - **£50**

2 bed property - **£99**

Fully insured

All work satisfaction guaranteed

Min order - £50

Rugs a speciality

Freephone **0800 3287941**

Mobile **07973 861973**

Sign WORKSHOP

Signs - Magnetics
Information Boards
Banners
Posters - Stickers
In house design service

*All bespoke and made
to your requirements*

Lawnwood Farm, Harwell, DN10 5BU

07745 533 216

www.signworkshopltd.co.uk

N.P.S. CONTAINER STORAGE SERVICES



• Air and water tight • Suitable for furniture • General goods

£85.00 per month NO VAT!

24 hours access | 7 days a week

Croft Farm, Everton

07979 735987





TONY'S TOPICS

Winter Olympics

This year's Winter Olympics takes place in Milano/Cortino d'Ampezzo, Italy from 6 Feb to 22 Feb. The opening ceremony will take place in the San Siro stadium in Milan.

The first Winter Olympics were held in Chamonix in 1924. However, long before this, the roots of winter competition were laid down by tweed-clad English and other European Aristocracy in Switzerland in 1884. The first Cresta Run was to prove to be the



birthplace of the sliding events. It continues to this day, and a new course is built every year by the St Moritz Tobogganing Club. The head-first skeleton is the favoured form of sliding. In the 1880s, the skeleton was little more than a tea tray on metal runners; the toboggans that use the Run today have changed very little.

Anyway, back to the Olympics. The sliding disciplines are the luge, skeleton and bobsleigh. Britain has medal prospects with Matt Weston and Marcus Wyatt in the skeleton event. Both competitors have podium finishes in recent events.

Alpine skiing in the guise of Downhill and slalom continues to be a weakness for us, but Britain has strong representation in the new disciplines of Snowboarding and Freestyle Skiing.

Snowboard Cross is chaos on a plank with 4 skiers on the same course. An absolute hoot!

Curling and Figure Skating are still strong sports, and there is a new Torvill and Dean in Ice Dance with Lilah Fear and Lewis Gibson.

Looking back at past Olympics, there is only one standout memory. Eddie The Eagle Edwards. Proof that dreams have no limits, Calgary, 1988. He finished last in the Normal

Hill and the Large Hill but will always be remembered as a true Olympian.

By way of explanation here, the Large Hill is a slide on skis for 120 m, reaching around 60 mph. Then a leap of faith, followed by a finely choreographed balancing, cum flying act, prior to a "safe" landing some 110 m further down the slope. This year,

for the first time, Ladies will jump the Large Hill as an Olympic Sport.

Sadly, we don't have an "Edwina the Eagle". At present

HAPPY VIEWING,
Tony






CQC Registered Provider

- ♥ Personal care
- ♥ Home & domestic help
- ♥ Respite care
- ♥ Long term conditions
- ♥ LA & Privately funded clients
- ♥ Free assessment & support to transfer from existing providers

Based in Harwell, serving the local community

CONTACT US

Hannah – 07845 510169
 Info@pinnaclecareprofessionals.co.uk








Scouts

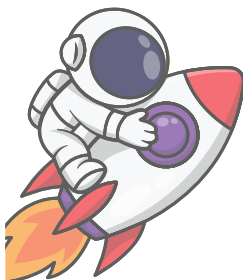
2nd Ranskill



IT'S GOOD TO BE BACK SCOUTING!

It's been lovely to be back at Scouts after our Christmas break, with all sections returning full of energy, enthusiasm... and only minimal confusion about what day of the week it was.

During the holidays, our younger sections enjoyed a fantastic pantomime trip, complete with plenty of laughter, audience participation, and the timeless joy of shouting at the stage. A big highlight and a brilliant way to round off the festive break. We are already excited about next year's panto trip!



Looking ahead, there's plenty of fun things happening. Squirrels and Beavers have an upcoming sleepover planned to the National Space Centre, where they'll be exploring planets, rockets, and all things out of this world. We expect lots of big questions, space facts, and possibly a few future astronauts in the making.

Meanwhile, our Cubs, Scouts, and Explorers have already been busy stretching their legs with a night hike. Armed with torches, teamwork, and impressive navigation skills, they embraced the challenge brilliantly and showed real confidence out on the trail. A fantastic achievement and proof that Scouting doesn't stop when the sun goes down.





The Sun Inn
EVERTON

Valentine's

Grab your girls for a fabulous afternoon!

BOTTOMLESS PROSECCO
for 1.5 hours

**& DELICIOUS
AFTERNOON TEA**
Style Snacks!

BOOK NOW!
Call 01777 818752





7th January 2026

Mrs Viv Preece
HEDS Magazine

Dear Viv and all involved in HEDS magazine,

We would like to pass on our sincere thanks to you for the very kind donation of £130.00 that has been raised in aid of Five Villages First Responders through Christmas messages being published in your magazine.



As you may know, our team of dedicated volunteers work in partnership with East Midlands Ambulance Service to provide a first response to medical emergencies within the local community in North East Nottinghamshire. When on duty, our CFRs are tasked by the Ambulance Service control room, following a 999 call, and are sent to give aid to patients until the arrival of the Ambulance.

Our volunteers undertake regular training and carry a defibrillator, oxygen and other lifesaving equipment.

- During 2025, our team were called to 238 emergencies and gave over four thousand hours of their time to be available on call and to attend call-outs, many hundreds of hours undertaking training and community engagement.
- Since our launch back in 2004, our dedicated volunteers have provided care to over 3,700 patients within the local community during their time of need.
- We have welcomed 3 newly trained team members to FVFR during 2025, but we are always looking for potential new members to train to become CFR's.
- During the last 12 months, we have continued to support local organisations with their Community Public Access Defibrillators and have provided several awareness sessions in many of the local villages for members of the public to attend to learn about cardiac arrest, CPR and using a defibrillator – all to help improve the chances of survival should a sudden cardiac arrest occur in the local community.
- We have continued to benefit from very kind donations and fundraising carried out by the local community. Such kind donations are used to help us to continue to provide our lifesaving Community First Responder team.

We would like to say a very big thank you to you and all the team and the readers of HEDS for supporting FVFR, it is very much appreciated indeed.

Yours sincerely,

Martyn Johnson
Group Co-ordinator
Five Villages First Responders
Email: contact@fvfr.co.uk
Website: www.fvfr.co.uk





MOORE GAS LTD

DOMESTIC & COMMERCIAL INSTALLATIONS,
SERVICE & REPAIR



**10 year guarantee on Worcester Bosch Boilers
with flexible finance available**



FEATURED SERVICES:

- Gas Boilers
- Oil Boilers
- LPG Boilers
- Stoves
- Powerflushing
- Landlord Safety Certificates



01427 881 175 | 07725 009 741

mooregasltd@yahoo.com

www.mooregasltd.com



- Heating Services • Boiler Services • Log Burner
- Competitive Pricing • Central Heating • Underfloor Heating





Vicar Writes

Dear Friends,

As I write this, the echoes of Christmas are still with us. The tree may be packed away, and the carols have faded, but thankfully, the message of Christmas does not disappear with the decorations. God has come among us, quietly and vulnerably, and that truth continues to unfold long after the inflatable Santas have been popped back in the loft! February and March are often described as “in-between” months. Winter still has a firm grip on the mornings, yet there are signs—small but unmistakable—that something is changing. Snowdrops push their way through hard ground, the evenings lengthen, and hope begins to stir.

The words of the prophet Isaiah seem especially fitting at this time of year:

“See, I am doing a new thing! Now it springs up; do you not perceive it?”

God’s promise of renewal speaks not only to the changing seasons around us, but to the work God continues to do within our lives and within the world. The Church’s journey mirrors this rhythm. After the joy and wonder of Christmas, we move through Epiphany, reflecting on who this child Jesus truly is, before turning towards the more searching season of Lent. Lent invites us to slow down, to be honest about ourselves, and to make space for God. It is not a gloomy season, though it is sometimes mistaken for one. Rather, it is a season of preparation—like soil being turned over in readiness for new growth.

And Easter, of course, is always ahead of us. Even as we walk the Lenten path, we do so knowing where it leads. The cross is not the end of the story. Resurrection awaits. Light overcomes darkness. Life is stronger than death.

There is something deeply reassuring about how closely God’s story is woven into the natural world around us. As the days grow longer and the earth begins to warm, we are reminded that what appears dormant is not dead. What feels

weary can be renewed. God’s “new thing” often begins quietly, almost unnoticed, before bursting into life. Perhaps this season invites us to pay attention to the small signs of hope around us and within us. A moment of kindness, a renewed sense of purpose or simply the pleasure of sunshine on our faces after a long winter. These are not small things; they are glimpses of resurrection life at work here and now.

As we journey together through these weeks, may we carry the light of Christmas in our hearts, walk thoughtfully through Lent and look forward with confidence to the joy of Easter. May the promise of spring remind us that God is always at work, bringing warmth, light, and new life—often when we least expect it.

With every blessing,

Becky

River Idle Churches invite you to our

Little Lambs

Baby and Toddler Group

Bawtry Church Hall – Every Tuesday
(on Church Walk, next door to Bawtry gym)

Everton Village Hall – Every Friday

9.30am - 11:30am
Term time only

Join us for
friendship, fun, stories
snacks and themed
crafts each week

email: riveridlechurches@gmail.com





BLACKSMITHS ARMS EVERTON



we will be showing all the six nations games

WEEKLY SPECIALS

Thursday - 2 pies
2 pints £30

Friday - 2 fish & chips
£22

saturday - Burger
& a pint £16

FIXTURES 2026

FRA 20:10 IRE
ITA 14:10 SCO
ENG 18:40 WAL

IRE 14:10 ITA
SCO 18:40 ENG
WAL 19:10 FRA

ENG 14:10 IRE
WAL 18:40 SCO
FRA 19:10 ITA

IRE 20:10 WAL
SCO 14:10 FRA
ITA 18:40 ENG

IRE 14:10 SCO
WAL 18:40 ITA
FRA 20:10 ENG



Music bingo every third
Thursday
8:30 pm

01777 818822

www.blacksmithsarmseverton.com



Getty Stock



Parish Council

Parish Council and Village Website:

<https://evertonparishcouncil.uk>

Please visit our website for latest information and village news.

Have your say: Everton & Harwell Speed Reduction – Twenty is Plenty!

The Parish Council are reviewing a proposal to reduce the speed limit in Everton and Harwell, north of the A631, from 30 mph to 20 mph. This reflects the fact that the internal road infrastructure was never designed for the volume and size of vehicles currently using it, and a concern that we have children and elderly residents who are more vulnerable. More to follow on this proposal information can be found at evertonparishcouncil.uk, and any initial comments can be sent to the clerk at theclerk@evertonparishcouncil.uk.

Step Fusion

The STEP Project Team has published public consultation dates, which can be found at stepfusion.com/consultation. In addition, the STEP team are planning a talk to our Primary School children - the generation who will benefit from the new jobs as well as the technological implications. Details of the STEP Project can be found at stepfusion.com.

Bassetlaw Achiever's Award

The Bassetlaw Achievers Awards celebrate the outstanding achievements of local residents and organisations. This year, Everton Parish is proud to nominate Sue Hughes. Sue has been put forward by the Parish Council in recognition of her exceptional hard work and dedication to the village. Her contributions span many aspects of community life, including the Secret Garden, the Community Orchard, the village Facebook page, and the extensive Local History Archive, all of which continue to enrich and preserve Everton's community spirit and heritage.

Friends of Everton Cemetery

Friends of Everton Cemetery supports the parish council by helping maintain the cemetery on Mattersey Road through tidy-up sessions, minor repairs, signage, and safety checks. New members are welcome, with no special skills required. To get involved, please contact the parish clerk.

Off-Road Vehicles on Bridleways and Byways

There have been reports of illegal motorbike and quad bike use on local bridleways and restricted byways. This is dangerous, causes environmental damage, and puts pedestrians at risk. These routes are for non-motorised users only. Please report incidents by calling 101.

Dogs and the Countryside

Dog owners and walkers are reminded to follow the Countryside Code, particularly keeping dogs on leads near livestock. Please note that dog fouling in public places is an offence under the Dogs (Fouling of Land) Act 1996. Everton Parish Council will be working with BDC Enforcement Officers, who will issue £100 fixed penalty notices to offenders.

Rural Watch Scheme

To protect the safety, security and unique character of our village, Nottinghamshire Police, in partnership with local councils, runs the Rural Watch Scheme, and we need your help to make it a success. Members become the "eyes and ears" of the village and countryside, helping to deter theft from farms, outbuildings and homes, whilst reporting suspicious activity quickly. By working together, we not only safeguard property but also the peace of mind and safety that makes Everton so special. For more information contact gary.thomson@evertonparishcouncil.org.uk

Bassetlaw Growth Grant

The Bassetlaw Growth Grant (part of the UK Shared Prosperity Fund) is now open, offering up to £4,000 to support local businesses. Eligibility and application details are on the BDC website, or contact Cllr Pashley (see contact section).

Postal Votes

If you are a postal voter, remember that you are now required to reapply for your postal vote every three years. To be eligible, you will have to submit your application online by January 31st, 2026.

Bassetlaw Mobile Community Shop

The Everton Mobile Shop calls every Thursday between 12:15 and 13:15 and is located on the Metcalfe playing field car park. The shop is open to everyone.

District Councillor's Surgery

District Councillor Steven Pashley is now running a surgery. The surgeries are to take place on the 3rd Thursday in the month, between 10-12 at Misson Village Hall (drop-in)

Useful Contact Details

Speeding Issues/Inconsiderate Parking

These can be reported to the Police on telephone number 101

Highways Issues (for example potholes, road defects, overgrown hedges, damaged signs\ overgrown public footpaths).

These can be reported Nottinghamshire County Council via their website www.nottinghamshire.gov.uk or by using the 'MyNotts' App. Or by contacting your Councillor Mike Robertson: mike.robertson@nottscc.gov.uk.

Environmental, planning and planning enforcement issues can be reported via the Bassetlaw District Council website www.bassetlaw.gov.uk or by contacting your District Council, Steven Pashley Email steven.pashley@cllr.bassetlaw.gov.uk

Upcoming Parish Council Meeting Dates

Parish Council Meetings: Monday 2nd February 2026,(Sun Inn Function Room)
Monday 2nd March 2026 (Village Hall)

Contact Details for the Clerk, Callum Bryant:
Email: theclerk@evertonparishcouncil.uk
Tel: 07362 287146

Parish Council documents including minutes, agendas and other local information can be found on the Parish Council's website:
<https://evertonparishcouncil.uk>

Parish Council meetings are normally held in the village hall and usually start at 7.15pm. Members of the public are always welcome to attend. Meetings normally take place on the first Monday in the month except when there is a bank holiday when the date will be scheduled as soon as possible after that date.



CLEANER SWEEPS
Chimney sweep

NO HIDDEN FEES

- CCTV INSPECTION
- REPAIRS
- NO MESS
- FULLY INSURED MEMBER
- COMPLIANCE CERTIFICATE ISSUED FOR PROPERTY INSURANCE REQUIREMENTS

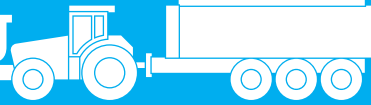
CALL PETE- 07583217834
www.cleanersweeps.com
CLEANER SWEEPS





Rob's Agri-Blog

'Farming all around us'



I always think that January is the longest month of the year – when it starts, we are still in the festive period – then we are all soon back to our normal working routines – Christmas and New Year long forgotten; cold, damp weather invariably prevails, and it seems a long trudge through to the end of the month...

But, on the plus side, January brings in the hopefulness of the new year, the days slowly start to lengthen, and my favourite part is the emergence of the first snowdrops – “venturous harbinger of Spring” as William Wordsworth so aptly described them in his poem ‘To a Snowdrop’. Hope springs eternal! (If we farmers weren't eternal optimists, we wouldn't carry on farming, in the vain hope of a better year next year??!!)

So, what's happening on the farms around us during this murky month? Not much is happening on the fields yet, but we have managed to apply some digestate to our land that is earmarked for maize growing this coming season. We have incorporated this immediately by cultivating it into the soil, thereby preserving the nutrients. Nutrients applied to the soil can be lost to the atmosphere by volatilisation, particularly nitrogen; so, cultivating them into the soil prevents this loss. Other losses due to run-off are also prevented.

Digestate is the organic fertiliser by-product of the Anaerobic Digestion (AD) plants that operate in the area. An AD Plant is a green energy Plant that converts organic matter into energy. In the case of our local AD plant at Lound, it is maize and grass silage that is the main source of organic matter. So, the maize that was harvested from our farm in September is currently producing energy, and the by-product of which is being spread back onto our fields, as an organic fertiliser, in the form of an organic slurry. That's a good 'green-cycle'! This will then help to grow

the next crop of maize, due to be planted in late April/early May.

In Layman's terms, an AD plant creates energy by mixing organic plant matter, such as maize silage, with water to produce a slurry that then heats up and decays in large sealed tanks. As the plant matter decays, it gives off methane gas, which is captured and used to power engines that, in turn, power generators that produce electricity, which is then fed into the National Grid to power homes and industry. The slurry by-product created by this process is the Digestate used for fertiliser. The solid matter is separated from the semi-liquid to produce a solid type of digestate and a liquid slurry type digestate. The liquid is by far the greater volume produced, and this is predominantly the digestate that is applied to our fields.

The digestate is a valuable fertiliser which will provide all the nutrients required to grow our crop of maize – hence no artificial fertiliser will be required. A win-win in my mind!

Maize also acts as a good 'break-crop' between cereals, which also acts as a good 'cultural control' of weeds, that helps in the farmers never-ending battle against controlling Grass weeds. Controlling grass weeds is difficult in cereal crops, because cereals themselves are a grass species!

But this is another article in itself- so I will wind the article up here and diverge into the usual spot of rural humour.....

An elderly American farmer had owned his large farm in Louisiana for many years.

Right at the back of the farm, there was a large pond that was ideal for swimming. The old farmer had fixed it up real nice with picnic tables, horse-shoe courts and some apple and peach trees.

One evening, the farmer decides to go down to the

18 Contact us: [e: hedstogether@gmail.com](mailto:hedstogether@gmail.com) // t: 01777 472396





Professional Heating Engineers

specialising in Gas/Oil & LPG Boiler Installation, Repairs,
Servicing & Annual Maintenance Contracts

Boiler Installation

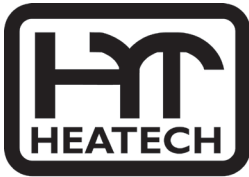


New Gas/Oil & LPG Boiler
Installation

Boiler Repairs



Emergency Callouts
Gas/Oil & LPG Boiler
Repairs & Servicing



To book a service or arrange an engineer visit...

T: 01427 810145

M: 07846 708 730

Email: info@heatech-ltd.com



www.heatech-ltd.com

pond to look it over, as he hadn't been down there for a while.

Before setting off, he grabs a five-gallon bucket as he decides he'll bring back some fruit.

As he nears the pond, he can hear voices shouting and laughing with glee. Clearly, someone is having a good time.

As the farmer gets closer, he can see a bunch of young women who are clearly skinny-dipping in his pond.

He makes the women aware of his presence, and immediately they all swim over to the far end.

One of the women then shouts, "We're not coming out until you leave, mister!"

The farmer replies, "Ladies, I didn't come down here to watch you swim naked or make you get out of the pond. You carry on."

The wily old-timer then holds up his bucket and says, "I just came down here to feed the alligators!"

On that note... until next month.

Robert Troop

DINGBAT PUZZLE

from Bryan Atkinson

SIGH

2 - 6 - 2 - 5

UPVII

2 - 6 - 5

Answers are elsewhere in the magazine

Everton Village Hall Refurbishment Phase One 26th January- 13th February 2026

Throughout this year, we are undertaking phased refurbishment works on the village hall. This is part of our five-year plan to further improve the facilities managed by the trust for the benefit of the community

The first phase starts on Monday 26th of January and will take approximately three weeks to complete. In this phase, the suspended ceilings in the main hall and snooker rooms will be replaced; new lighting will be installed in both rooms; the High Street door will be replaced; new carpet tiles will be laid in the snooker room; panelling will be fitted to the walls of both rooms; and new blinds will be fitted to both rooms.

During this work, the hall is closed to all users. We apologise for any inconvenience caused and thank our many regular users for making alternative arrangements during this period.

Once the work is complete, keys for the new door will be issued to regular users of the hall.

Future phases of work include the re-sanding and sealing of the parquet floor in the main hall, an upgrade to the heating system and the decoration of the whole interior of the hall. These phases can mostly be fitted around the use of the hall and should not require further hall closures.

The Trust would like to say heartfelt thank you to Doug for his dedicated service as Booking Secretary. Doug will be stepping down from this role on 25 January 2026 but will continue supporting us as caretaker. From this date onward, all bookings should be sent to bookingssecretary@metcalfe.org.uk.

**Chair Metcalfe Recreation
Committee and Metcalfe Trust**

Celebrating 80 Years NORTH NOTTS SPRING PLOWING MATCH 2026

Sunday, 08 March, 2026



To be held at Holly House Farm, Scaftworth, Bawtry DN10 6BJ by kind permission of G. T. Wagstaff & Son

What 3 Words: Glare - Greet - Volume

Ploughing Commences 10.00am

Free Entry & Car Parking

Refreshments & Raffle - Cash Only

Dogs on Leads Welcome

E-mail for Entries: entrynnp@gmail.com

All further information, rules etc.—see Website

www.nnpm.co.uk



PANCAKE PARTY

**AT ST NICS CHURCH HALL
BAWTRY**

Join us for a morning of fun, food, friendship and pancakes, with games, as we look at the meaning of Shrove Tuesday.

**17TH
FEB 2026
SHROVE
TUESDAY
10AM - 12
NOON**

Children must be accompanied by an adult.

Suggested donation of £1 per child



www.hardlandscapingfencing.co.uk



**Here at Hard Landscaping & Fencing
we specialise in bringing your
outdoor living space to life.**

- PATIOS • BLOCK PAVING • GRAVEL GARDENS
- TURFING • DRIVEWAYS • FENCING/GATES
- TIDY UPS • HEDGE CUTTING • PAGODAS
- RAISED SLEEPER BEDS • WALLING



Contact Andrew for a
FREE quote today on
07703 294 471
andylawrence71@yahoo.co.uk

Working throughout North Lincolnshire,
South Yorkshire and North Notts





Harwell // Everton // Drakeholes // Scaftworth

EVERTON GARDEN HOLDERS

There will be no Garden Holders meeting in February due to the refurbishment of the Village Hall.



EXERCISE AND WITCHES

The January meeting of the WI was a chance to start getting fit again after a season of festivities with Sue who took us through a session of gentle seated Pilates – a lot of laughter and a lot of muscles discovered – a great evening.

Our February meeting will be a short AGM and then we welcome Adrian Gray talking to us on the Witches of Worksop, so please come along to the Village Hall for the 7.30 meeting – it will be an intriguing meeting. Ann 818993

Village Coffee Morning

The dates for January coffee mornings are TUESDAY 10th in the Church and TUESDAY 24th in the Village Hall

We look forward to seeing you all then. Times are 10.30 – noon in the Village Hall – everyone welcome.

See you there. **Ann 818993**

LITTLE LAMBS

NB. Little Lambs will be meeting in the Church while the Village Hall is having renovations. i.e. 30th January and all of February. 9.30 - 11.15 am

Everton Bowls Club

Everton Bowls Club annual AGM Sunday 22nd March at 2.00pm in the village hall.

All welcome.

Please come along and find out about the club.

For further information please ring Ray Harris 01777 817375.

Long time since you played table tennis or snooker on full size table?

Why not give it a try at Everton village hall, Thursday evenings 7.30 to 9.00 pm..

Info available from Mick Boulby, "Northville", Church St. 817761.

March deadline

The deadline for the March 2026 issue will be 14 February.

Thank you to you all.

Editorial Team

Dingbats: NO ENDING IN SIGHT,

UP BEFORE SEVEN

22 Contact us: e: hedstogether@gmail.com // t: 01777 472396



Useful phone numbers

ART GROUP	Penny Harley	07826 689339
BASSETLAW HOSPITAL	Main Switchboard	01909 500990
BELL RINGERS	Christine Dunn	818732
BLUE SKIES (Community Orchard)	Sue Hughes	07921 132889
BOWLS	Pauline Harris	817375
CHOIR	Paul Sydney	07852 952217
CHURCH WARDEN	John Dunn	818732
CHURCH Weddings, Baptisms, Funerals	Rev Becky Hancock	01302 218308
CRICKET - Seniors	Steve Blackburn	07771 390907
CRICKET - Juniors	James Doody	07714 488333
COUNTY COUNCILLOR	Tracey Taylor	816781
DISTRICT COUNCILLOR	Steve Pashley	07920 542067
DONCASTER ROYAL INFIRMARY	Main Switchboard	01302 366666
EVERTON LOCAL HISTORY ARCHIVE	Sue Hughes	07921 132889
EVERTON PRIMARY SCHOOL	Office	817350
FLY TIPPING REPORTING	BDC	01909 533533
FOOTBALL	Chris Rowe	crowe10291@aol.com
GARDEN HOLDERS	Val Kirby	816840
HEDS	Ann Hickman	818993
JOHN COUPLAND HOSPITAL Gainsborough	Minor Injuries	01427 816500
KNITTING GROUP	Sue Ross	01777 816142
KNITTING GROUP	Angela Harrison	07784 056808
METCALFE RECREATION COMMITTEE	Sue Ross, Secretary	816142
METCALFE TRUST SECRETARY	Rachel Hyland	07595 932307
NEWSPAPERS	Mattersey Post Office	817231
OIL SYNDICATE	Tony Richardson	817617
PARISH COUNCIL & CEMETERY	Callum Bryant	07362 287146
LITTLE LAMBS	Di Grice	07748 804080
POLICE	Worksop	01909 500999
POLICE - Claire Walker PCSO	Harworth Police Station	07525 226626
POST OFFICE	Mattersey	817231
PTA	Sarah Chadburn	07951 712556
SNOOKER/TABLE TENNIS	Mick Boulby	817761
TENNIS	Mick Boulby	817761
VILLAGE HALL Caretaker & Bookings	Doug Haynes	816673
WOMEN'S INSTITUTE	Ann Hickman	818993

If you wish to be inserted in our local contact list then contact us:

email: vivienne.preece@outlook.com // telephone: 01777 818180



February 2026

Weekly Meetings - All Village Hall unless otherwise notated

THURSDAY - TABLE TENNIS,
SNOOKER, VH - 7.30pm
- BASSETLAW MOBILE SHOP
12.15PM - 1.15pm

FRIDAY - LITTLE LAMBS
9.30-11am term time - VH

2nd PARISH COUNCIL - 7.15pm
Sun Function Room
OIL ORDERING DATE

8th HOLY TRINITY - 11.15 a.m. Holy Com-
munion

10th VILLAGE COFFEE 10.30 - Church

14th HEDS DEADLINE

16th WI 7.30p.m. VH

24th VILLAGE COFFEE 10.30 VH

March 2026 and on

5th PARISH COUNCIL

22nd BOWLS CLUB AGM

Oil Syndicate ordering dates March 2, April 6,
May 5

MAY 16/17 SCARECROWS AND FLOWER
FESTIVAL

Church Register

Funeral of Betty Briggs on 19th December
2025 in the church.
May Betty rest in peace.

Funeral of Sue Redfern on 21st January 2026
in the church.
May Sue rest in peace after her brave battle with
MND.
Our thoughts and prayers are with Paul, Laura,
Ben and all the family.

HEDS Editorial Team

Ann Hickman - Editor	ann@ityldu.co.uk	01777 818993
Viv Preece - Treasurer/Advertising	hedstogether@gmail.com	01777 472396
Adrian McGuigan - Design and Production	studio@mcguigandesign.co.uk	07858 207756
Jean Winder - Distribution		01777 817777
Mike Harrison		07732 956097

HEDS Together

Advertising Rates

Inside Pages

Full Page £18.00 per month
Half Page £10.00 per month
1/4 Page £8.00 per month

Front Cover

1/2 page £25.00 per month

(Front Cover advert limited to 2 months in any 12 month period)
As at present, advertisers paying annually in advance will only pay for
10 months advertising.

To advertise contact: **tel: 01777 472396**
hedstogether@gmail.com

Print quality of advertisements

Although we always try to ensure that our advertisements are well presented, unfortunately from time to time, some of our advertisements may be a little faint and lacking definition or clarity. This is because the printing process we have to use to produce HEDS Together works better where the original document is solely in black and white and with no background colouring.

It would greatly assist the editorial team if, when submitting advertisements for publication, advertisers are able to use black and white with limited use of background wherever possible.
May we thank you for continuing to support HEDS Together and should you need any assistance we will be only too pleased to help.

The Editorial Team

Disclaimer & Copyright

The views expressed within this newsletter DO NOT necessarily reflect the views of the Editorial Panel. We make every effort and take great care in the assembly and production of this newsletter. However, we accept no responsibility for matters or disputes arising as a result of errors, printing errors, stories, features or advertisements which appear in this publication. Submitted articles, pictures and advertisements are accepted on the understanding that the contents are true and accurate and that the contributor owns the copyright or has cleared the material for use and that HEDS Together has permission to publish all or part of that submitted material.